

ALL-IN-ONE SOLUTION
FOR BIM-PROJECTS

NESTLER^{smart}BIM



THE FUTURE OF PROJECTMANAGEMENT

Our all-in-one BIM project solution

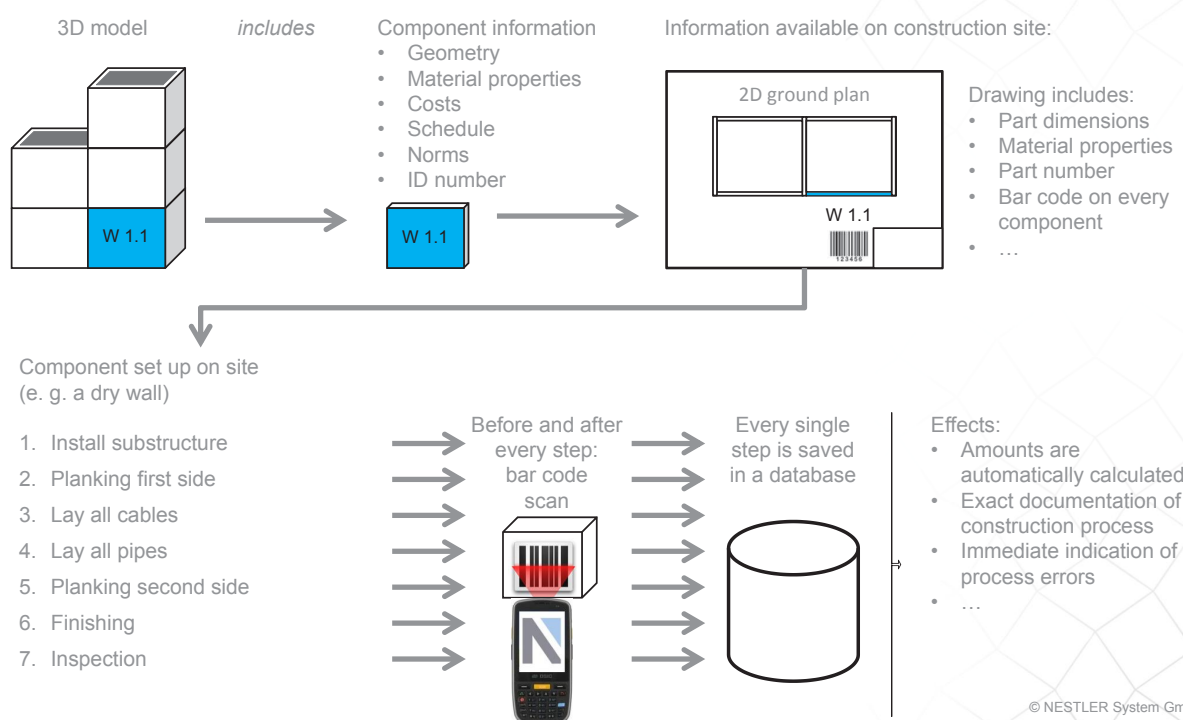
NESTLERsmartBIM offers you a comprehensive project solution for the management of projects based on BIM method. For the first time ever our web-based project platform brings ALL data of every single trade and every single component throughout all project stages together. The display of these data is based on a uniform digital background and display format. Thus all processes are consistently documented for you – your project is always up-to-date and so are you – no matter where you are.

The most important features:

- all plans and drawings available incl. administration
- cloud-based online platform
- interface to amount and cost calculation
- deadline monitoring
- change management
- component monitoring
- daily construction records
- quality assurance
- documentation of all processes
- invoice verification
- report management

All of these features make an exact schedule and realistic budgeting possible. Furthermore they guarantee consistent quality assurance and documentation of all the single phases in your construction project throughout planning as well as realization.

Another additional benefit of NESTLERsmartBIM is the component monitoring for every single trade – from drawing to final assembly. The online platform NESTLERweb, the portable database supported barcode scanners and the NESTLERmobil App are easy to use work tools for architects, engineers, and craftsmen. The combination of all of these NESTLERsmartBIM – elements enables you to transparently record, retrieve, forward, and exchange data on the latest actual values of documents, plans, components, and building zones. This goes for single worksteps, as well as for entire construction stages. These are the strengths of the online-platform NESTLERweb and its work tools.





A central drawing and document management which continuously records and documents all data, to be accessed by all parties involved in the project at any time and from any place, is indispensable for BIM projects.

The starting point for NESTLERsmartBIM is a 3D model designed by architects or our service team which specifically predefines the single components. These components form the basis for the amount calculation. Later on these components can be linked to the corresponding positions in the BOQ, the installation points, and deadlines.

Furthermore these amounts make the comfortable creation of a BOQ for the single trades possible. They can be used for the bidding process of private and public investors.

In the same way these amounts support invoice verification during the construction process.

The result is better planning reliability for all involved parties. Plan changes are always transparent regarding quantities and BOQ positions.

After contracting and start of construction works the craftsmen use their provided barcode scanners to report construction progress for single components or entire construction stages for their trades on a daily basis. The recording of material deliveries, warehouse stock, and the presence of the workers is done in the same simple way using the scanning technology.

Online platform

Rep

Database

Document man

Component-Room-Connection

M

Project solution

Construction progress

Insp

Document linkage

On

Quality assurance

Cross-enterprise collaboration

Personnel logging

3D - Amount Calculation

Part identification

EPC - Engineering Procurement Con

Material documentation

BIM - Buildi

Barcodes

Cross-company project co

Room book

Component track

Integrated messaging system

Material certificates

ports

QA-Documents

management system

Drawings

Material

Optimized warehouse management

ections

Mobile barcode scanner

line daily construction records

Supply chain management

Invoice verification

Barcode labels

Site documentation

Status

struction

System delivery notes

Online QA reports

ng Information Modeling

ontrol

Part release

Drawing history

king system

Target/actual

Automatic measurements

Mobile App

Deadline monitoring

Site manager and site supervisor can document their site inspections and daily construction records by the use of our app NESTLERmobil and then send their documents online via NESTLERweb to the respective people or companies.

All underlying data are centrally recorded, administered, and monitored by our specialized employees. Consistent target/actual performance comparisons for all activities make sure that planning data, construction progress, and their direct impact on all areas are reliably saved, and communicated to all involved parties real-time and without special interfaces. Thus possible deviations can be recognized early and appropriate measures can be planned precisely.

With our integrated messaging tool we offer you data transmission at the highest possible level of privacy protection for your project platform. All data, documents, and information are administered according to defined workflows, and will thus not get in the wrong hands.

Consequently only authorized project parties can access, update, forward, or print documents, drawings, and components including their links in our NESTLERweb.

NESTLERweb is designed as a private cloud, and therefore does not interfere with your in-house IT landscape, but allows all project partners to communicate with the project database through personalized access rights – at any time, from any location.

Plan administration, recording of construction progress, material and construction documentation, quality assurance, and site logistics, as well as measurement and invoice verification are usually considered very time-consuming processes in a large-scale project. Thanks to automated processes in NESTLERsmartBIM all of these processes are supported and severely simplified.





„Thanks to such a system virtually all interface problems can be solved.
The subject of project control is raised to the next level.“

Mr. Kramer, ThyssenKrupp AG

The structured data management in our system, the precisely defined, comprehensively monitored processes for manufacturing, quality management, logistics, and construction progress, as well as the linking of all documents to the components and materials allows for saving cost and time of up to 20% in project control.

After the completion of the construction process the comprehensive documentation can be handed over to facility management. This serves for administration and later on for changes or repair works to the building.

Thanks to NESTLERsmartBIM all data can be found in our structured database also after many years. No matter if you need specific data on floor covering, window frames or an installation plan. It will not be necessary to collect all stock data later on.

NESTLER smartBIM

ALL-IN-ONE SOLUTION FOR BIM-PROJECTS



NESTLERsmartBIM is the most advanced project control solution for projects of various sizes available on the market. Already today it meets the highest standards of BIM requirements for the future and can be used absolutely independent from your in-house software solutions. This makes us the ideal partner for project management of BIM projects in civil engineering.

With our unique project database and our experienced team of specialists, we offer you a customized service at an amazing cost-benefit ratio. We support and assist you in handling planning projects in BIM, and of course in the installation, and operation of the NESTLERsmartBIM solution.

Benefit from NESTLERsmartBIM – experience the difference and be part of the future of cross-company project control.

NESTLER SYSTEM GMBH

☎ +49 (0) 375 270 552 - 0

🏠 www.nestler-system.com

✉ contact@nestler-system.com

